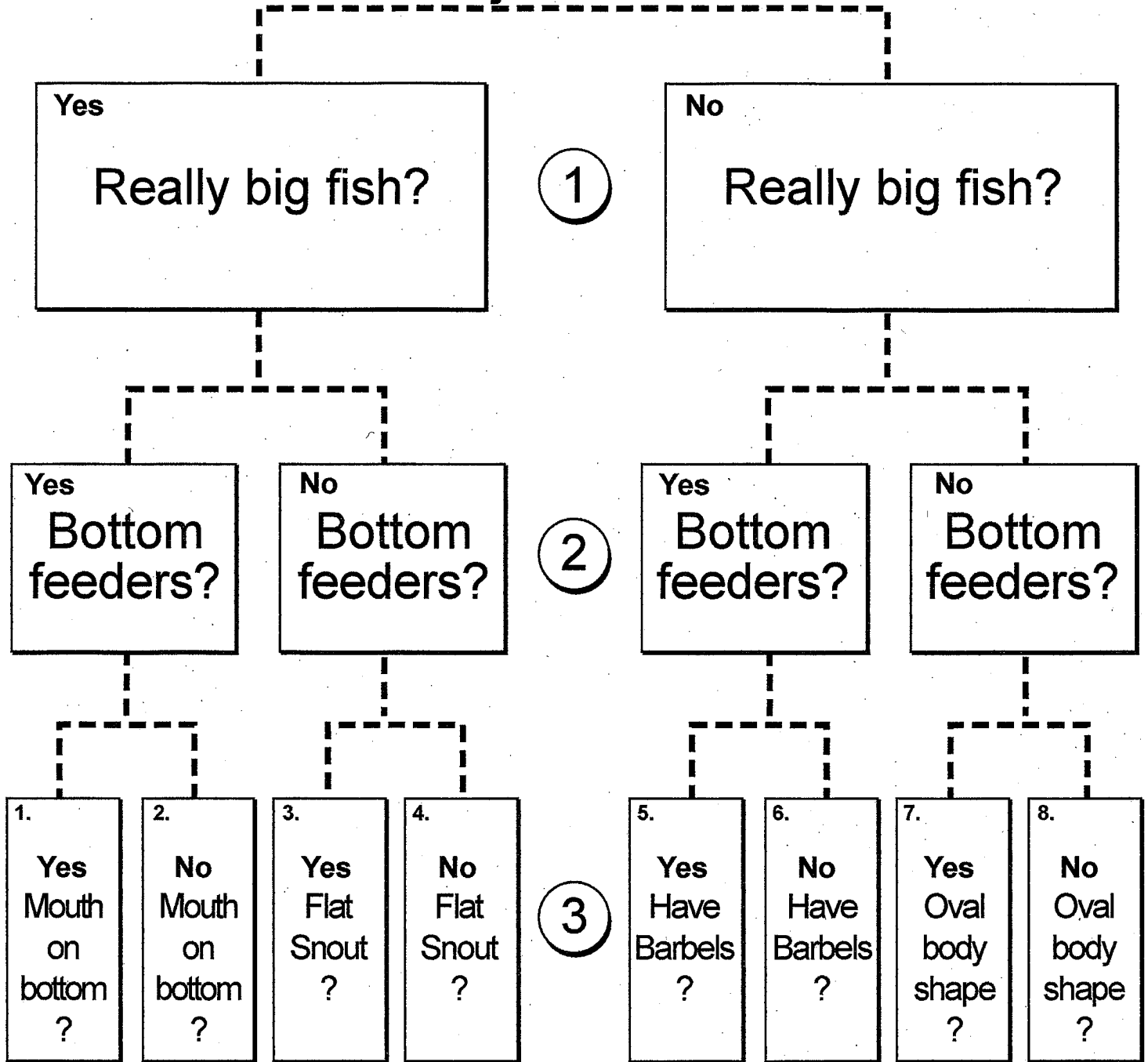


# A Tennessee Aquarium Dichotomous Key

## *Nickajack Lake Fish*



\_\_\_\_\_ BLUE CATFISH

\_\_\_\_\_ LAKE STURGEON

\_\_\_\_\_ STRIPED BASS

\_\_\_\_\_ BUFFALO

\_\_\_\_\_ LARGEMOUTH BASS

\_\_\_\_\_ SUNFISH

\_\_\_\_\_ CARP

\_\_\_\_\_ PADDLEFISH

\_\_\_\_\_ GOLDENEYE DUCK

Write a descriptive sentence about one of the fish in the third level. Use the clues in Levels 1-3 to write the sentence.

---



---

**CLUE:** Many bottom feeding fish have mouths angled down towards the bottom or completely under their heads.